

SONY

Hi-Fi Products
Service Bulletin

Sony Service Company : Technical Services
A Division of Sony Corporation of America
Sony Drive, Park Ridge, New Jersey 07656

Model: STR-AV970X / AV1070X / D790 / D990

No. 320

Subject: No Display Due To Open R-975

Date: February 10, 1993

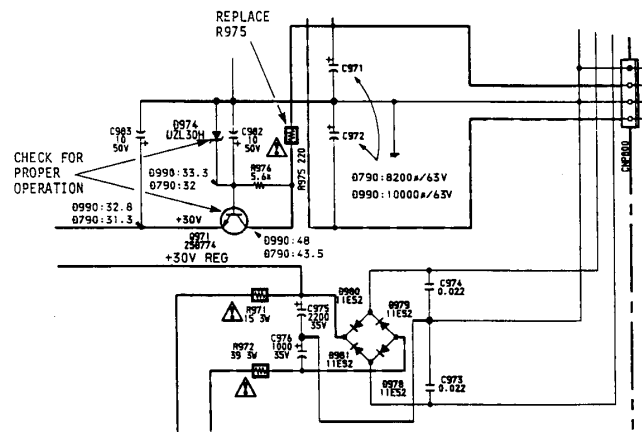
Symptom:
(13)

No front panel display and inactive +30 volt line due to an open circuit at R-975. R-975 opens due to excessive current. The PC board may become discolored in the area surrounding R-975 and in some cases it is necessary to replace Q-971 and D-974.

Solution:

Check Q-971 and D-974 for proper operation (replace if necessary with original replacement parts) and replace R-975 with the new replacement part shown in the chart below.

REF	FORMER		NEW	
	DESCRIPTION	PART NUMBER	DESCRIPTION	PART NUMBER
R-975	CARBON 220, 5%, 1/4W	1-249-409-11	METAL FILM, 220, 5%, 1/2W	1-214-848-00



Reference: FPR-N2215
Auto-Flagging: YES

PRINTED IN U.S.A.
CSA-13193-9

CSA-13 Receiver